

Lunchtime clubs and After School activities



Afterschool Late Bus

**We run an after school late bus at 4.30
Monday - Thursday for any students
who currently travel on school buses
so students can stay to any of the
after school activities.**



HOMework CLUB

**MONDAY & THURSDAY 15.15PM – 16.15
IN THE LIBRARY (CENTRAL HUB).
EVERYONE WELCOME.**

We can:

Provide laptops Reset Passwords Print resources

Give support completing work

Give support using homework software platforms

Email work Give a space to complete work.

PE LUNCHTIME CLUBS 1:20 – 1:50

Trainers required for lunchtime activities, full sports kit needed for Fitness Suite

PE lunch time clubs – Autumn 2

Monday	Tuesday	Wednesday	Thursday	Friday
KS3 Basketball (JOM)	KS4 Basketball (JOM)	Basketball All (JOM)	Table tennis (DHE)	Dodgeball (JOM)
Football KS3 (DHE)	Fitness Suite (SCA)	Fitness Suite (SCA)	Badminton (SLE)	Badminton (SLE)
			Dodgeball (JOM)	

PE AFTERSCHOOL CLUBS 3:10 – 4:10

PE After school clubs – Autumn 2

Monday	Tuesday	Wednesday	Thursday	Friday
KS3 Girls Football (SLE)	Netball (SCA/KLW)	Fitness (JOM)	KS3 Rugby (JOM) *new*	Fitness (SLE)
Kinball (SCA)	Badminton (LCT)	Basketball (LCT)	Dance <i>Kelly</i> First 3 weeks!!	
KS3 Boys Football (DHE)	KS4 Football (DHE)	Period 6 (SLE)	Gymnastics SCA <i>Not on 9th Nov due to parents evening</i>	



QUIZ!

PD House Quiz:
Collect from **CF11**



Saturday, 19 August, 2023

Door Open At 8:00pm

Return by **15th December**

Prizes for top scores in
each year group!



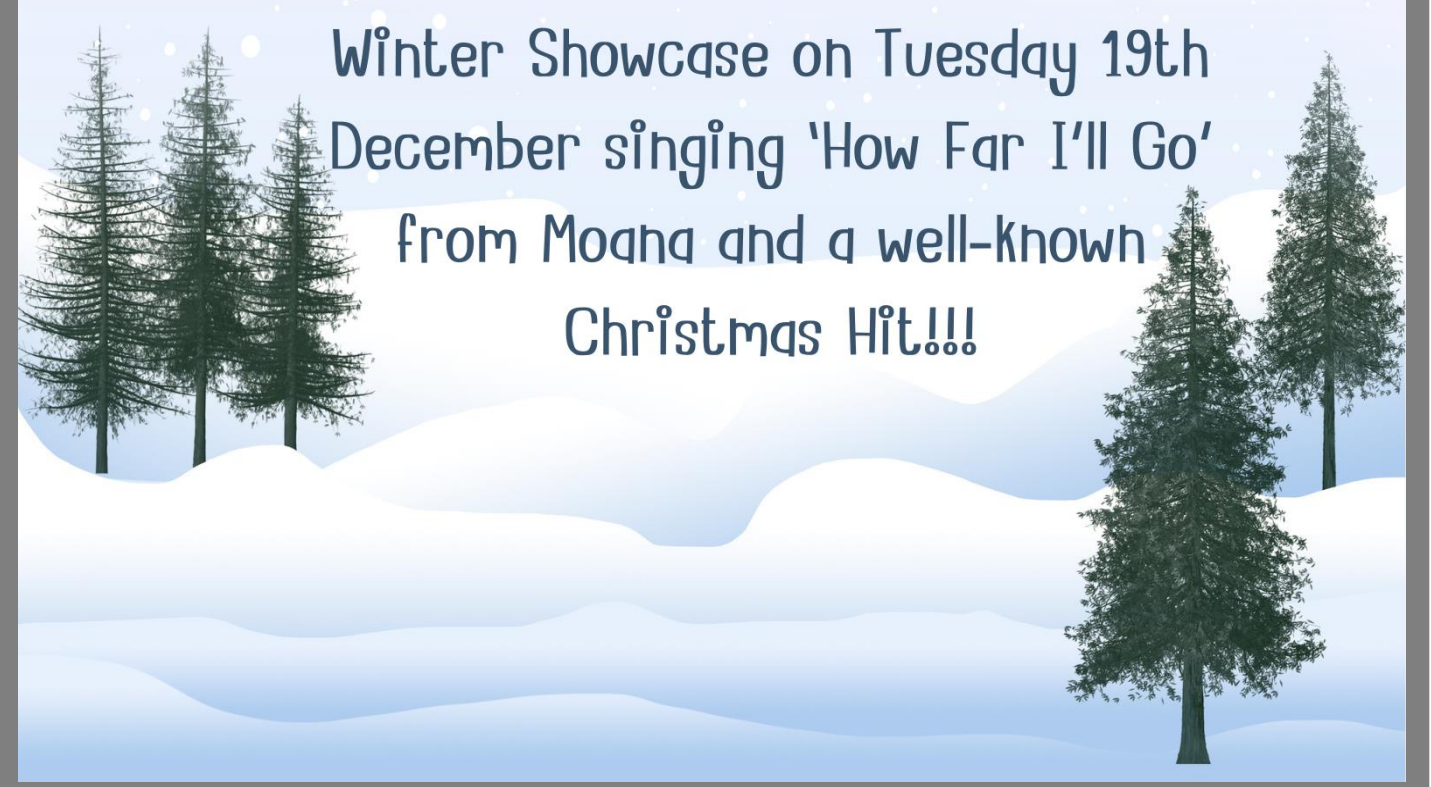
DO YOU LOVE TO SING?

Come along

Tuesday

Lunchtimes in

S2!



Our Choir will feature in KLA's
Winter Showcase on Tuesday 19th
December singing 'How Far I'll Go'
from Moana and a well-known
Christmas Hit!!!

A poster for a Creative Writing Club. The background is dark green with a grid of white dots in the top right and bottom right corners. On the left, there is a photograph of a person's hands writing in a spiral notebook, with a guitar and a blue hat resting on a white surface next to it. The text is in a white, cursive font.

Tuesday Lunchtime 1.20 - 2.00
N8

CREATIVE WRITING CLUB

With Ms Barber

Final Deadline for Poster: Fri 1st December
Email or printed version to Miss Worledge

**Create the best poster
for our Winter
Showcase**

This will be used to promote our production.
Please see Miss Worledge for all the
information that needs to go on this poster!

Warhammer Alliance Club at KLA



Every Thursday 3pm to 4:30pm in S4

With Mr Blows

KING'S LYNN ACADEMY

House Event Year 7 & 8 Creative Characters

- In English, we have been learning about heroic and villainous characters, like Oliver, Bill Sykes and Fagin in Year 7, or the more dual-natured hero Holmes and ambiguous villains Irene Adler and John Clay in Year 8.
- Now, it's your turn!
- Our House Competition this term is for you to create your own character. It can be a hero, a villain- or even both! You can go for the innocent hero, or mean and moody, violent villain, like a budding Dickens, or you can create a more complex, dual-natured character, like Arthur Conan Doyle. The choice is yours!
- You can also choose the format of your creative character competition entry. It could be a piece of writing, but doesn't have to be. You could create a cartoon, a labelled illustration, make a model, write a song, rap or poem about them... the possibilities allow you to show your creativity at it's best!
- Ask your English teacher if you need any further help or advice. Now it's over to you! Competition closes Friday 15th December.



Christmas Wellbeing

King's Lynn Mental Health Support Team are holding a themed drop in for students. This month our drop-in theme is Christmas Wellbeing.

Come and get involved, take part in festive activities and learn some top winter wellbeing tips. We look forward to meeting you.

Date 5th December and time: 13:15 – 13:55

Location: CF12 – Mr Brian Reeve-Hayes



FEMINIST CLUB



**WEDNESDAY
LUNCHTIMES N5**

**Interested in issues
concerning the rights
of girls and women?**

Everyone is welcome!





RAINBOW BEES



N3 HOME OF LGBTQ+ CLUB

EVERYONE

WELCOME!!!

Monday lunch times and Wednesday

lunch 1:15-1:45 ...

LGBT+
people
are

HUMAN!



The KLA Youth Project

Tuesdays in CF12 from
3 until (approx) 5pm.

(formerly the Community Ambassadors Project),
Green Award winners of the BBC's Make A
Difference Awards in 2023



An abstract painting with vibrant blue, teal, and turquoise strokes, accented with soft washes of pink, red, and yellow. The texture is visible, suggesting a thick application of paint or pastel.

TUESDAY

3 - 4:30pm

N1

ART CLUB

**EVERYONE
WELCOME**

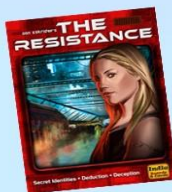
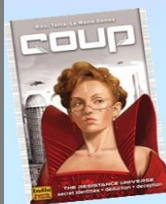
A club for games that involve dice, luck and cardboard!

Open to all years



Board Game **GEEK** Club

You can bring your own games to play!



Tues and Fri lunchtimes, in CF2, with Mr Essex

"Games are the most elevated form of investigation" – Albert Einstein

CHESS CLUB

***Tuesday, Wednesday,
Thursday lunchtimes in CF2***

with Mr Essex



FRIDAYS
1.20PM—1.50PM
IN CG2

GERMAN **GAMING** **CLUB**

Blooket

TARGETED **YOUTH** SUPPORT SERVICE

YOUTH XTREME **SPORT DROP IN**

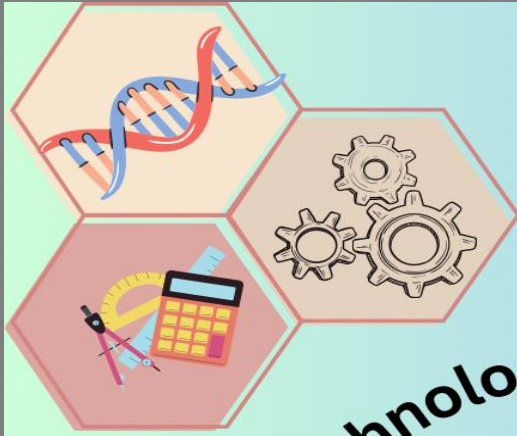
Join Us Every Tuesday
@ KASET Skatepark PE30 2NB
From 5pm till 6pm
Entry is free
Ages: 11-18

Come receive support, hang out with your
mates and go on the park with BMX,
Skateboards or Scooter.

ALIVE



KASET
SKATEPARK & MUSIC COMMUNITY



Science, Technology, Engineering and Maths

Y7 & Y8 STEM club

Calling all budding engineers to
design and build your own
rollercoaster



When: Mondays after school (3:15-4:15pm)



Where: S15 (Miss Maughan's room)



Speak to Miss Maughan for any more information.



PERFORMING ARTS

LUNCH CLUBS

Monday
KS3 Band



SPLAT

Tuesday
PA Games
Club

Wednesday
Musical Theatre Film
Club



Wednesday After
School
KS4 Band

Thursday
Instrument
Practice

Friday
Choir



CARD GAMES AND CARD TRICKS



Tues and Fri lunchtimes in CF2

with Mr Essex

The place for card games and card tricks.

Play a game you know, teach a game to others or learn a new card game.



Bring your own deck of cards, or borrow a deck.

Or learn/teach card tricks, and some of the techniques to invent your own card tricks!



**MFL GAMES
COMPETITION**

**WITH A CHANCE
TO WIN**

**£50 OF AMAZON
VOUCHERS**



Language nut

Digital Language Resources for Primary & Secondary Schools

If you enjoy **MFL games** and would like to win one of the **£50 Amazon** vouchers- please see your MFL teacher or Mrs Curcillo to collect your login details.
Competition close date: 3rd December

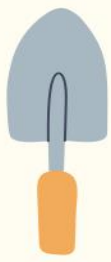
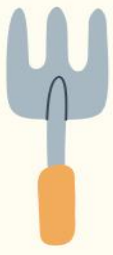




Poetry Club

Thursday Lunchtimes in
N5
Everyone is welcome!





KLA Biodiversity club!

Environmental club, where we grow vegetables, build habitats and all things nature!



Wednesday lunchtimes (1:15-1:55pm)



Science allotment
(behind the old boys gym)



Speak to Miss Maughan for any more information.



KLA House Competition
Backwards Advent and the CUB Community
Project

Supporting 100 Hamper Challenge



20th November - 20th December

Each house has a type of food to bring in, to help our 100 hamper challenge creating hampers for the Elderly. For each item donated the students name will go in a draw to win a prize, so the more donating the more chance! Also the house that wins will be in for a chance to win.....

Suggested Donations for each house:

Riga - Tinned & Jarred Food

Stargard - Tea, Coffee & Biscuits

La Rochelle - Chocolate, Crackers & Nuts.

Hamburg - Cereals, Pasta & Dried Food

Any other donations greatly received!

All items to Miss Bowen in CF11