

news from

King's Lynn Academy

Friday 5th December 2025

Dates for your diary:

Thursday 11th December – Christmas jumper day

Wednesday & Thursday 17th & 18th December – Performing Arts Christmas show

Wednesday 17th December – School Christmas lunch to purchase via ParentPay

Friday 19th December – Last day of term, finish at 1.05pm

Tuesday 6th January – School reopens after Christmas holiday

Christmas Jumper Day **Thursday 11th December:**

We are having a Christmas jumper day Thursday 11th December; full school uniform is to be worn except a Christmas jumper can be worn instead of a blazer/ school jumper. A minimum donation of £1 to support Save the Children please.



Christmas Lunch

The canteen are cooking their amazing Christmas dinner on Wednesday 17th December; each child will receive a cracker with their turkey dinner and a dessert. This will be the only hot meal option on this day, however the sandwich and snack bar will still be open as normal during break and lunch. The price of the Christmas lunch is £4 payable via ParentPay please, by Thursday 11th December. If your child is entitled to free school meals then their Head of Year will be asking them if they would like to have the Christmas lunch.





LAST DAY OF TERM

ARRANGEMENTS

Lessons will run until 1.00 when students will be able to leave the academy for the Christmas holiday, break time will be extended to allow students to purchase food from a limited range. Those traveling by taxi, Eagles and Harrods buses will be collected at 1.10, the Lynx buses will not arrive on site until the usual time of 3.00. Any students who wish to remain in the academy to wait for the Lynx buses are welcome to do so

Student absences & medical appointments:

If your child has to have some time off school unwell or for any other reason, please ensure that you contact the absence team if possible **before 8.30am** via our absence email on:

studentabsence@kla.eastern-mat.co.uk or call the new absence line **01553 602874** and leave a message.

Please include your child's name, year group and why they are absent. If we have no contact from you we will send you a text message if your child is absent.

If you need to take your child to a medical appointment during school time please can we ask that you either send in an appointment card or letter with your child or please email them to **studentabsence@kla.eastern-mat.co.uk** so we are aware in advance when you collect your child.

Requesting time off in term time:

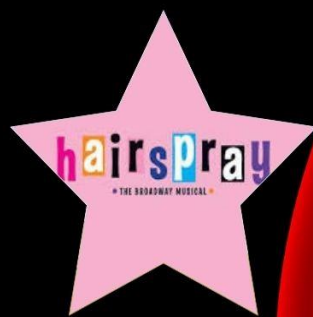
In the exceptional circumstance you need to request time off in term time, please complete an application for pupil leave of absence from school during term time, as soon as possible and return it to the attendance department or email it to **studentabsence@kla.eastern-mat.co.uk** The form can be downloaded from the link below, found on our school website or collected from the school reception. Requests can only be actioned if submitted on this form, you will be notified via email of the decision. Please note requests will only be authorised in exceptional circumstances. **[download.asp](#)**

We are recruiting:

We have some fantastic opportunities to become a member of our esteemed team here at KLA. Please follow the link below to see our latest vacancies.

[Eastern Academy Trust - Vacancies and Careers \(eastern-mat.co.uk\)](#)

A Night at the Musicals



Wednesday 17th &
Thursday 18th December
Show begins at 6:30pm, doors open at
6pm.

Tickets available via ParentPay

DUKE OF EDINBURGH

SPRING TERM UPDATE

Last week we had an amazing awards evening to recognise all the hard work our Year 10's carried out in order for them to achieve their Bronze DofE awards.

We also celebrated the amazing success of our Yr11 Students completing their Silver DofE awards which is a truly outstanding achievement. We are so proud of you Adrian, Adrija, Daniel, Jac, Freddie and Olivia



COMING UP

Hopefully in the coming weeks, we will be getting our new cohort of bronze students signed up to DofE so they can begin their sections.

If you have any questions or queries please do not hesitate to contact Miss Bowen or email:

kla-dofe@kla.eastern-mat.co.uk



KLA House Competition

Backwards Advent and the CUB Community Project

Supporting 100 Hamper Challenge

Each house has a type of food to bring in, to help our 100 hamper challenge creating hampers for the Elderly. For each item donated the students name will go in a draw to win a prize, so the more donating the more chance! Also the house that wins will be in for a chance to win.....

28th November - 16th December



Suggested Donations for each house:
Riga - Tinned & Jarred Food
Stargard - Tea, Coffee & Biscuits
La Rochelle - Chocolate, Crackers & Nuts.
Hamburg - Cereals, Pasta & Dried Food
Any other donations greatly received!



All items to Miss Bowen in CF11



🎄 KLA Festive Photography Challenge! 🎄

Can you capture the magic of the festive season — at home or out and about?

Maybe dress up a sibling as an elf, or capture your pet sparkling among the decorations! Get creative with festive fonts and filters, and most importantly, have fun spreading some seasonal cheer!

📷 Please send your festive photo to Mrs McGrane at tina.mcgrane@kla.eastern-mat.co.uk by Wednesday 10th December

All KLA students and staff are warmly invited to take part — we can't wait to see your festive creations!



Free
Family
Event!

KING'S LYNN
MINSTER

Hope - Hospitality - Heritage



Christmas Tree Festival at King's Lynn Minster

Friday 5th December
to Sunday 7th December 2025
(10am-6pm Friday & Saturday)
(10am - 4pm Sunday)



prontaprint
NORFOLK



KING'S LYNN
MINSTER

Hope - Hospitality - Heritage



FREE
Family
Event

Come & Sing Christmas Carols

Sunday 14th December 2025

3pm in The Minster

Come along and join in with all the family favourites!

Free Family Events



Christmas Films at the Minster

Father Christmas
Wednesday 17th December
4pm & 6pm

Christmas Raffle & free children's draw.



It's a Wonderful Life
Thursday 18th December, 7pm
Bar & Christmas Raffle

Tickets are FREE, follow the link to book:
bit.ly/ticketsKLMinster

FREE Family Event

Family Christingle Services in the Minster

Christmas Eve 2pm & 4pm

The Christingle services are FREE to attend, and you don't have to book but it does help us to make sure we have enough Christingles!

Bookings can be made via Ticket Tailor using the QR Code or link:
bit.ly/ticketsKLMinster





Protect your festive season with a flu vaccine

The NHS is making it easier than ever to get vaccinated

Clinics available across Norfolk

Call **0300 555 5055** or email

hct.csaisnorfolk@nhs.net to book your child's flu vaccination at a clinic near you today.

At The National College, our WakeUpWednesday guides empower and equip parents, carers and educators with the confidence and practical skills to be able to have informed and age-appropriate conversations with children about online safety, mental health and wellbeing, and climate change. Formerly delivered by National Online Safety, these guides now address wider topics and themes. For further guides, hints and tips, please visit nationalcollege.com.

10 Top Tips for Parents and Educators

ELECTRICAL SAFETY AND DEVICES

Electrical safety is a vital topic for parents and educators, especially with the growing use of devices like smartphones, laptops, and power banks. Electrical fires are a major risk and are the cause of many deaths and injuries each year. There are reportedly nearly 20,000 accidental fires of electrical origin each year in the UK. This guide offers practical advice to help families and schools prevent electrical hazards, and promote safety when using everyday devices.

1 CHECK FOR OVERHEATING

Devices such as laptops, tablets, and smartphones can overheat if used for long periods or when charging. Ensure that children don't use devices on soft surfaces like beds or sofas, which can block ventilation. If a device becomes unusually hot, turn it off and unplug it. Overheating can lead to fire hazards if left unchecked.

2 INSTALL RESIDUAL CURRENT DEVICES

Ensure that homes and schools are equipped with Residual Current Devices (RCDs). These devices cut off the power if an electrical fault occurs, preventing electric shocks and reducing the risk of fires. RCDs should be tested regularly to ensure they are working properly. More information about RCDs is available from Electrical Safety First.

3 AVOID OVERLOADING SOCKETS

Plugging too many devices into one socket can overload the electrical system and cause a fire. In schools and homes, ensure extension leads are not overloaded and never 'daisy chain' multiple extension cords together. Educate children on the dangers of connecting too many devices to a single outlet.

4 POWER BANKS: SAFE USE

Power banks are a handy way to charge devices, but they can also pose a risk if misused. Ensure power banks are of high quality and comply with UK safety standards. Teach children never to leave power banks charging unattended, and to avoid placing them under pillows or bedding where they may overheat.

5 REGULAR DEVICE INSPECTIONS

Regularly check devices for signs of wear and tear. Frayed charging cables, cracked device casings, or devices that are slow to charge may indicate electrical problems. If any issues are noticed, stop using the device until it can be repaired or replaced by a qualified technician. This proactive approach helps prevent fires caused by faulty devices.

6 UNPLUG DEVICES WHEN NOT IN USE

Encourage children and pupils to unplug devices when not in use, particularly overnight. Devices left plugged in unnecessarily can overheat or become fire hazards, especially if left charging unattended for long periods. Simple habits like unplugging can prevent serious incidents.

7 USE GENUINE CHARGERS

Always use chargers supplied by the manufacturer or from a reputable retailer. Faulty or counterfeit chargers can cause devices to overheat, short-circuit, or even catch fire. Teach children the importance of avoiding poor-quality chargers, and regularly inspect charging cables for signs of wear or damage. More tips on safe charging can be found at Electrical Safety First.

8 WATER & ELECTRICITY DON'T MIX

Teach children that water and electricity are a dangerous combination. Devices should never be used near sinks, bathtubs, or swimming pools. Parents and educators should ensure that any electrical appliances near water sources have proper waterproof casings and are plugged into RCD-protected outlets.

9 KEEP DEVICES VENTILATED

Devices need proper ventilation to avoid overheating. Avoid stacking items on top of plugged-in devices like laptops or gaming consoles, and make sure there is enough space around devices to allow for airflow. Proper ventilation helps prevent dangerous heat build-up, reducing the risk of fires.

10 SUPERVISE YOUNG CHILDREN

Younger children may not understand the dangers of electricity, so it's important to supervise them when they are using devices. Keep electrical cords out of reach and always remind children never to put objects into electrical outlets.

Meet Our Expert

James Whelan is an experienced health and safety expert who is a Chartered Member of the Institution of Occupational Safety and Health. He provides services to educational settings as well as many other industries to help them maintain a safe working environment.



#WakeUpWednesday

The National College

See full reference list on our website

@wake_up_weds

/www.thenationalcollege

@wake.up.wednesday

@wake.up.weds

Users of this guide do so at their own discretion. No liability is entered into. Current as of the date of release: 03.12.2025

Did you know?

Research shows that reading for pleasure has the most impact on the frequency at which young people read, their educational achievement and their personal development.



Renaissance Learning's report for 2018 showed that in primary school, children are generally reading books that are of a level exceeding their age and ability. Unfortunately, this changes at secondary school; children in Year 7 generally read books which are levelled at a year below their age and this gap either plateaus or continues to widen throughout the remainder of their time at secondary school.

Research has shown that as they grow older, children find reading less enjoyable and they also read less frequently. We also know from research that, in general, boys enjoy reading less than girls.

What can you do?



3 things to do if your child is at Key Stage 3:

Encourage your child to find texts they enjoy; choice and interest in reading is key. Spend some time at the library or a local book store and ask someone who works there to give suggestions based on your child's interests, films or books they've enjoyed or any new and popular books other children have enjoyed. Some research has shown that children who have books of their own enjoy reading more, but it is often worth ensuring that they're confident they'll enjoy the authors/texts they are choosing before investing!

Encourage your child to read for 15-30 minutes every day. This doesn't have to be novels - it could be short stories or even non-fiction. If your child is willing, sit with them and read together so that you can discuss and tease out some of the issues that crop up.

If your child has shown an interest in a recent issue in the news, or a particular topic at school, look into non-fiction articles or books related to it and help them see how they can follow their own interests and develop their knowledge of different areas they find engaging.

3 things to do if your child is at Key Stage 4:

By this age, young people can sometimes be harder to inspire in areas like reading. It can sometimes be worth

having a discussion about what your child dislikes, or finds difficult, about reading; be open-minded about their views and try to discuss ways around these together. It's fine to have dislikes, but what might they enjoy reading? Where could they make a start?

Encourage your child to find texts they enjoy; choice and interest in reading is key. This doesn't have to be fiction, it could be non-fiction extracts or whole texts too. You may find text ideas together, from your child's own selection or seek advice from their teachers at school. Due to the nature of GCSE English Language, you may find that your child's school library or English department have banks of fiction and non-fiction extracts for them to explore. This can help them, and you, to get a feel for what may interest them before widening your search to whole texts.

Consider, with your child, what subjects or topics they are particularly enjoying and seek out fiction and/or non-fiction linked to those. For example, some young people who like science enjoy biographies of well-known scientists from across the ages, those interested in history have a whole wealth of fiction and non-fiction available to them in their chosen areas of interest and those who enjoy maths may find books about topics like Alan Turing's Enigma machine of interest.



STRATFORDS INDUSTRIAL

17-19 Hamburg Way,
North Lynn Industrial Estate,
King's Lynn, Norfolk. PE30 2ND

Tel: King's Lynn (01553) 772043
E-mail: schools@stratfords.com
Web: www.stratfords.com

NOVEMBER 2025

Dear Parent,

As your school's chosen uniform supplier, along with a new CEO and other contributing factors, we have made the decision to move the purchasing of school uniform to ONLINE ONLY. Since COVID purchasing online has been the way forward for many companies, and we accept that we also must make changes to provide a better service. We experimented with several different ideas this year, some worked, some failed but overall, the online service proved to be the best way forward. This does mean uniform will not be available to 'try on' and the 'School Shop' will not be available during the summer holiday as in previous years. All uniform collections will still be from our 'service window' at Stratfords, uniform deliveries can still be made free of charge to your designated school (term time only). Our refund and exchange policy has been updated to reflect the changes.

Kind regards,

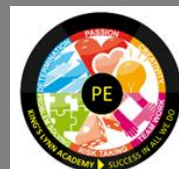
The Schools Team

CHIEF EXECUTIVE DIRECTORS
R. HOLLOWAY J. HAZEL F.R.I.C.S F.N.A.E.A P. CROKER LCB

Stratfords Industrial is a Trading Name of Stratfords Limited

Registered in England
Registered No. 167923

PE Weekly Sports Bulletin:



Clubs Timetable

We're pleased to share our clubs timetable for this term. Although our offer is slightly reduced due to fixtures and parents' evenings, we're still running a range of exciting opportunities for students to stay active and enjoy sport. Full details of the clubs and activities available can be found on the noticeboard in the PE department and on our new PE Twitter page, where we'll also post any updates or changes throughout the term.

Thank you for your continued support in helping our students stay involved in school sport!

Date	Club	Staff
Thursday 4 th December	All year's badminton	Mr May
Monday 8 th December	All years football	Mr Herring
Wednesday 10 th December	Rugby Club	Mr Herring
Monday 15 th December	All years football	Mr Herring
Wednesday 17 th December	All year's boys' basketball	Mr May
Wednesday 17 th December	Rugby Club	Mr Herring
Thursday 18 th December	All year's badminton	Mr May



Fixture timetable updated

<u>16th December</u>	<u>Year 7 Boys Basketball</u>	<u>KLA</u>
<u>16th December</u>	<u>Year 9 Boys Basketball</u>	<u>KES</u>

Winter months



As we move further into the winter months, the weather has become much colder and frosty. We would like to remind all students that it is their responsibility to come prepared for outdoor PE lessons.

From 8th December, all PE lessons will take place outside due to examinations in the Sports Hall. Students already know the activities they are taking part in, so please make sure you are dressed appropriately.

What students are allowed to wear -

- Hats and gloves
- Base layers/underlayers (e.g., under-armour tops)
- Leggings or sports tights worn under PE shorts
- School rugby tops and PE jumpers
- Additional layers worn under the school PE kit

We strongly encourage students to layer up to stay warm, comfortable, and ready to take part safely.

Thank you for your support in helping everyone stay prepared during the cold weather.

Year 7 Round Up – Compiled by Mrs Mann:



Well hello there December! How jolly lovely to see you!

I am pleased to report that we have moved our muster area to a space in school that is half concrete, half grass. It is smaller than what we had but so much better in terms of the mud situation. I made this announcement on Tuesday at the end of lunch, and I am pleased that the students remembered when they arrived Wednesday morning.

Our attendance this week, as a school has hit a low! We really have been hit with the winter germs. So many students and staff absent it feels more like a curse! Attendance in year 7 was 92% this week. Please can you send a paracetamol in with your child, should they need one during the day and we will, as always support where needed. If your child is unwell, has any upcoming appointments, which it has been unavoidable to book out of school time please remember to contact us before 8.30am, preferably via our absence email - studentabsence@kla.eastern-mat.co.uk or call the absence line **01553 602874**. Heads of year are calling each day to check in with parents and students; at the third day of absence we will be required to carry out a home visit/or video call. Please can I ask that if you do text my work phone or email me directly with absences, please contact the attendance officer too as I cannot guarantee that I will always see the messages.

As a year group, we have received a grand total of 1198 achievement points this week which is superb. So lovely to see that the students are so committed and hardworking in all lessons. The homework projects for History, Geography and Science that have been coming in are spectacular. Some creative and interesting ideas that have taken so much time and dedication.

A huge congratulations to **Logan Barnes** who is our highest achiever this week with 24 points. Look out Logan as Rebeka is hot on your heels. Well done to the 5 highest achievers for their top efforts.

Barnes Logan	24
Noreikaite Rebeka	23
Langbridge Jacob	22
Vinogradova Violetta	22
Sulkovska Elizabeth	20



So many of you take part in activities and hobbies outside of KLA; please do tell me as I love to know but also, it's wonderful to share this in our newsletters. This week I introduce **Adas Ridikas** to you. Last weekend Adas took part in a Taekwondo competition in Cheltenham where he won a bronze medal at the Global Taekwondo International (GTI) British Championships. Wow, Wow, Wow! Congratulations Adas, what a fantastic achievement and we wish you all the best at future competitions and events. Please do let me know if your child is part of a team/club/organisation and of course of any recent achievements as I would love to feature them too.

As you know, should you need to contact me for a pastoral issue that you would like to discuss as Head of Year 7, then please email me, Emma.Mann@kla.eastern-mat.co.uk. Alternatively, you can call me on **07511 225248**. My work mobile is on between 8am and 4pm Monday to Friday however please remember that my phone will remain in my office and that I can only answer if at my desk.

Year 7 Round Up continued....

With the mobile phone policy that we have in place, please consider this when contacting me as I may not be able to answer your call/text as quickly as I previously have. I will return your call/text as soon as I can during my working hours so, please bear with me. Please remember that we do have a 48-hour return of contact policy, but I will continue to try my best to return calls and reply to emails. If, on the odd chance you don't hear from me and still want to discuss something, please try again, send a text or WhatsApp to give me a little reminder nudge!

Dates for your diary

Thursday 11th December – Christmas Jumper Day

Wednesday 17th December – Christmas Lunch Day

Friday 19th December – Last day of term with an early finish of 1pm

Have a wonderful weekend, stay safe, warm and cosy.

Mrs Mann.

Year 8 Round Up – Compiled by Mrs Lockey:



Happy Friday!

Just a gentle reminder from me about uniform, thanks to you all have been fantastic supporting us with this but please remember leggings are not permitted. Some girls are creeping in with them - we need them to be trousers or KLA skirts. If there are any issues, please feel free to let me know if we can help in anyway. We always endeavour to support all the children.

Our assembly was taken by **Miss Bowen** regarding the importance of being safe and seen whilst walking and cycling on dark nights. Also, remembering to turn on lights on bikes wearing a helmet for safety. It is so important we have these conversations with the children especially with the winter nights.

We are running the **hamper challenge** again this year; any contributions are gratefully received. These are given out every year to OAP's in the community. Many thanks to all that have already donated and in advance for those of you that will. This is the 8th Year we have organised this; any contributions to go to **Miss Bowen's** room or myself.

Attendance this past week has been **87.72%** can we please attend each and every day wherever possible. I totally appreciate there are some illnesses that cannot be prevented. This is the lowest it's been this year with all the germs and bugs. If your child is unwell, has any upcoming appointments, which it has been unavoidable to book out of school time please remember to contact us before 8.30am, preferably via our absence email - studentabsence@kla.eastern-mat.co.uk or call the absence line **01553 602874**. Heads of year are calling each day to check in with parents and students; at the third day of absence we will be required to carry out a home visit/or video call.

To support the students and to set the right example, I will not be using my mobile phone when I'm out and about around the school. Please take this into consideration when contacting me, I may not be able to answer your call or text as quickly as I would like. I will endeavour to return your call/text as soon as I can during my working hours. If you have a pastoral issue you would like to discuss with me as Head of Year, then please email me on Hayley.Lockey@kla.eastern-mat.co.uk

Thank you all so much for your support with arriving on time this week.

If your child is late without a valid reason time will be made up and they will work in the late room on arrival. Detentions are then set followed by after school detentions without good reason for lateness.

As a year group we have achieved **2,548** points this past week up to Wednesday! Well done year 8, that is fantastic, keep up the great work and efforts in your lessons! That is amazing!

Our **highest achiever** this week in the year group was **Mia Eikens**, a massive well done to her. Keep up the hard work and effort in your lessons.

Student of the week this week goes to **Dom Hines**, he has made an amazing start back to school. Well done Dom, keep up the amazing work, you have been fabulous.



If your child does any activities outside of school, please let me know so happy to share please email me always love to know what the students are doing in their own time. Hayley.Lockey@kla.eastern-mat.co.uk

Dates for diary



Year 8 Parents Evening was cancelled - new date to be re-scheduled.

Hamper challenge any donations gratefully received.

Christmas Jumper Day Thursday 11th £1:00 minimum donation please

Last day of term Friday 19th December 2025

Have a wonderful weekend take care and stay safe.

Mrs Lockey.

Year 9 Round Up – Compiled by Mrs West:

Welcome to December!! The weather has certainly turned colder and the mornings are extremely dark. We have certainly been hit by illness this week with attendance figures for the year group at some of our lowest ever. I do hope those of you that are feeling unwell recover soon. As part of this illness we have had to postpone our parents evening next week. The new details will be sent out to you as soon as they have been confirmed.

Well done to the students that are in the table below for achieving a great amount of achievement points in the last week.

Student	Last week
Clarke, Oliver	49
Beliqui, Eduardo	48
Caplinskyte, Zhoiee	45
Davies, Lily	41
Ellis, Summer	41
Lambert, William	35
Wolstenholme, Mia	34
Oughton, Olivia	33
Asoba, Sam	32
Clarke, Evelyn	32

★ ★ Student of the week this week is **Elina Janulionyte**. Elina, you have really impressed us this past two weeks. Keep it up! ★ ★

Sorry for the short and sweet bulletin this week!

I hope you all have a lovely weekend when it gets here.



School days to go!!!

Mrs West.

Year 10 Round Up – Compiled by Miss Fountain:

Another Friday! This week has flown by again, meaning we are getting closer to Christmas, the joy and happiness, but also the stress, worry and even upset of missing a loved one this time of year. As I have already said, if you need anything, especially with Christmas on its way, please do not hesitate to let me know and I can either support you or signpost you to someone or somewhere that can. My number is **07511 224223**, or email lucy.fountain@kla.eastern-mat.co.uk

This week at KLA:

Our lovely PD teacher and leader of Duke of Edinburgh, Miss Bowen hosted a very informative assembly about cycling safety, about how important being visible is when out on a bike and what precautions cyclists can take to ensure they are safe and seen.

This week attendance has been really low, however, I absolutely understand that there are so many bugs around affecting students and staff, I do hope you all stay well and please keep me updated when your young people are too unwell to attend.

We do visit on day 3 of absence so please be aware that this will be happening. This is just to ensure your young people are safe and if there are any barriers to them attending, we may be able to help.

Celebrating at KLA

The top achievement points this week were for:

Student	Points
Hastings, Kain	55
Fakenbridge, Bella	50
Manning, Elliemay	46

The total for last week for year 10 was 2170. Well done to them all!!

One our lovely students, **Shyanne Bramwell** received an award during a ceremony at the weekend. Her mum said:

"The community impact award was given to her by the mayor. It is because Shyanne gets involved with everything in the community. She gets involved with The Beacon and police who work in the community. So she has done community clean ups, she helps at beacon, she is very caring to everyone who goes there, she does all the girls hair braiding there, she goes to the community meals, and she helps out at pizza projects at the beacon. She also has a lot to do with the King's Lynn Police, she has done litter picking with them, and she has also done the remembrance with guides, and she done the remembrance poppy selling with the police."

I am so so proud of Shyanne and I can only imagine how her parents feel! Well done Shyanne, huge congratulations to you.

If you have anything you think deserves a shout-out please let me know and I will pop it into the bulletin next week.

Dates to remember:

Last day of College - Friday 12th December

End of term - Friday 19th December

First day of term - Tuesday 6th January 2026

That's all from me, have a great week and I will catch up with you all next week. Stay safe.

Miss Fountain.

Introduction of work experience at KLA:

Dear parents and carers,

I am excited to announce that King's Lynn Academy is launching it's very first work experience for year 10 (14-15yrs) students. Students will be on placements 13th - 24th April 2026.

As many of you are aware, work experience is a very valuable tool to help students learn about themselves, their future career paths, and experience what the world of work is like.

As this is our first year, I am looking to build a database of potential placements to help support students. If you or someone you know could host one or more of our students, please contact me: katie.leeming-watts@kla.eastern-mat.co.uk

Taking on a work experience student shouldn't usually require additional paperwork or insurance. Please see the HSE advice: [Young people at work: Work experience - HSE](#)

I look forward to hearing from you.

Mrs Leeming-Watts

PE Teacher and Careers Leader

Year 11 Round Up compiled by Mrs Laws:

Good evening from year 11.

It's been another busy week here at the academy with more preparation going on for the mocks, but I am concerned about the amount of year 11's that are coming into school at gone 8.45am in the mornings, they are missing valuable learning time. School starts at 8.35am so students need to be in by 8.30am please. With the mock exams starting next week, students cannot afford to be late into school, or they will disrupt the exam room which isn't fair on the other students. Detentions will be issued for lateness as per our behaviour policy.

Mocks kick off next Monday 8th with Maths & Biology, Tuesday is Maths & History/Geography, Wednesday sees Chemistry & English Language, Thursday is Maths and Computer Science (college will be on as normal for students) and on Friday we have Physics and then finally on Tuesday 16th English Language.

Year 11 students will be the only students allowed in the central hub before school whilst the mocks are on to give them a chance to do any final revision in peace.

The students that take Hospitality and Catering did a fantastic job with their cooking GCSE exam this week. Some of the pictures I saw of their meals looked delicious; they made things such as cheesecakes, burgers, pasta, tarts, all from scratch and their presentation was outstanding. Well done to all those students.

Anyone wishing to apply for a place at Springwood 6th form, their applications close on 19th December so you must apply before then.

If you need to contact me for a pastoral issue as Head of Year 11, then please email me on jacqueline.laws@kla.eastern-mat.co.uk. Alternatively, you can call me on **07591 388678**. My work mobile is on between 8am & 4pm. I would just like to remind you all that I am not on school site from 12.30pm on a Thursday as I will be over at the college with my students. On Thursdays, my work phone will be on until 4.30pm. As we are setting a positive example for the students, I do not have my mobile with me around the academy anymore, only in my office so please be mindful of this when you call, and I will return your call asap.



Year 11 attendance was 88% this week, which is down on last week. Attendance in year 11 is CRUCIAL. Literally everyday matters. It's a proven fact that the better your school attendance, the better GCSE grades you achieve, the better job you get so the more money you earn. I will be constantly reminding you of this throughout the year.

Well done to those of you who were here every day, and to those of you who still have 100% attendance this academic year, that is amazing!. If your child is unwell, has any upcoming appointments, which it has been unavoidable to book out of school time please remember to contact us before 8.30am, preferably via our absence email - studentabsence@kla.eastern-mat.co.uk or call the absence line **01553 602874**. Heads of year are calling each day to check in with parents and students at the third day of absence we will be required to carry out a home visit/or video call. Please can I ask that if you do text my work phone or email me directly with absences, please contact the attendance officer too as I cannot guarantee that I will always see the messages.

Please make sure when booking appointments during school time you remember to provide us with the medical evidence so we can authorise these absences and it then won't make a difference to your child's attendance percentage.

As a group we have achieved over 1000 reward points this week which is amazing but down on previous weeks so let's get those points back up. Our highest achievers in a 3-way tie are **Elijah Gedge, Lillie King and Sephira Griggs-Williamson**, congratulations to them.

Have a safe and wonderful weekend, get some revision in ready for the mocks next week.

Mrs Laws.

Year 11 PPE timetable 2025 - 2026

	08:45	13:15
Monday 8 th December	Maths Paper 1 8300/1F Foundation Students only (1hr 30)	Combined Science Trilogy Biology 8464/B/1F & 8464/B/1H (1hr 15) Biology Paper 1 8461/1H (1hr 45) Early Lunch
Tuesday 9 th December	Maths Paper 2 8300/2F Foundation Students only (1hr 30)	History Paper 2 8145/2A/A & 2B/C (2hr) Geography Paper 3 8035/3 (45min) Early Lunch 1pm start
Wednesday 10 th December	Combined Science Trilogy Chemistry 8464/C/1F & 8464/C/1H (1hr 15) Chemistry Paper 1 8462/1H (1hr 45)	English Language Paper 1 8700/1 (1hr 45) Early Lunch
Thursday 11 th December	Maths Paper 3 8300/3F Foundation Students only (1hr 30)	Computer Science Paper 1 J277/01 (1hr 30) Early Lunch
Friday 12 th December	Combined Science Trilogy Physics 8464/P/1F & 8464/P/1H (1hr 15) Physics Paper 1 8463F/H (1hr 45)	
Tuesday 16 th December	English Language Paper 2 8700/2 (1hr 45)	

	08:45	13:15
Thursday 5 th February	Hospitality & Catering Unit 1 5409UB0-1 (1hr 20) French Listening and Understanding 1FR1/2F/H (50min/1hr 05)	Hair and Beauty Synoptic 12:45 start
Friday 6 th February	Religious Studies A P1-3 Christ Religious Studies A P1-5 Islam 8062/13 & 8062/15 (1hr 45) Business Paper 1 8132/1 (1hr 45)	German Listening and Understanding 1GN1/2F/H (50min/1hr 05)

	08:45	13:15
Monday 9 th February	English Literature Paper 1 8702/1 (1hr 45)	French Reading and Understanding 1FR1/3F/H (45min/1hr) German Reading and Understanding 1GN1/3F/H (45min/1hr)
Tuesday 10 th February	Mathematics Paper 1 8300/1F & 8300/1H (1hr 30)	Sprt Stdies: Cntmpry Issues Sprr Wrtn R184/01 (1hr 15)
Wednesday 11 th February	English Language Paper 1 8700/1 (1hr 45)	Business paper 2 8132/2 (1hr 45) Early Lunch
Thursday 12 th February	Maths Paper 2 8300/2F & 8300/2H (1hr 30)	Computer Science Paper 2 J277/01 (1hr 30) Citizenship Paper 1 8100/1 (1hr 45) Early Lunch Hair and Beauty Synoptic 1pm Start
Friday 13 th February	Geography Paper 1 8035/1 (1hr 30)	French Writing 1FR1/4F/H (45 min/1hr) German Writing 1GN1/4F/H (45 min/1hr)

	08:45	13:15
Monday 23 rd February	Combined Science Trilogy Biology 8464/B/2F & 8464/B/2H (1hr 15) Biology Paper 2 8461/H/F (1hr 45)	Religious Studies A P2A Excl Text 8062/2A (1hr 45) Early Lunch
Tuesday 24 th February	Mathematics Paper 3 8300/3F & 8300/3H (1hr 30)	Geography Paper 2 8035/2 (1hr 30) Early Lunch
Wednesday 25 th February	English Literature Paper 2 8702/2 (2hr 15)	Combined Science Trilogy Chemistry 8464/C/2F & 8464/C/2H (1hr 15) Chemistry Paper 2 8462/2H/F (1hr 45) Early Lunch
Thursday 26 th February	History Paper 1 8145/1A/B & 1B/A (2hr)	Hair and Beauty Synoptic 12:15 start Citizenship Paper 2 8100/2 (1hr 45) Early Lunch
Friday 27 th February	English Language Paper 2 8700/2 (1hr 45)	Combined Sci Trilogy Physics 8464/P/2F & 8464/P/2H (1hr 15) Physics Paper 2 8463/2H/F (1hr 45) Early Lunch